

**GLOBALMOST**

**SURFACES**

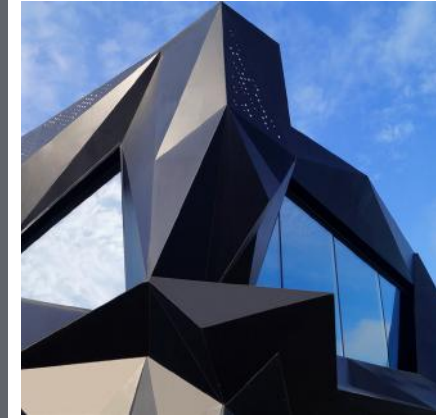
---

## EXTERIOR DECORATIVE HPL PANELS (VENTILATED FACADE)

*Phenolic impregnated kraft papers pressed with high UV resistant decorative paper in 4mm / 6mm / 8mm / 10mm in 1300x3050mm and 1860x4200mm dimension with more than 100 design options.*

*Details: [globalmost.com](http://globalmost.com)*

*Used in Hotels, Restaurants, Schools, and many other public projects.*





## ECO-FRIENDLY INTERIOR DECORATIVE SURFACES & PANELS

HIGH-PRESSURE LAMINATE WITH  
BIO-RESIN AND RECYCLED PAPERS

**LIGNIN TECHNOLOGY  
SIGNIFICANTLY REDUCES THE  
AMOUNT OF PHENOL IN RESIN  
BY UP TO 50%**

*Our products contains 10% bio base  
material in the resin and is made with  
50% recycled paper. Therefore G-Inno  
has 60% of recycled content*

**Natural &  
Renewable**

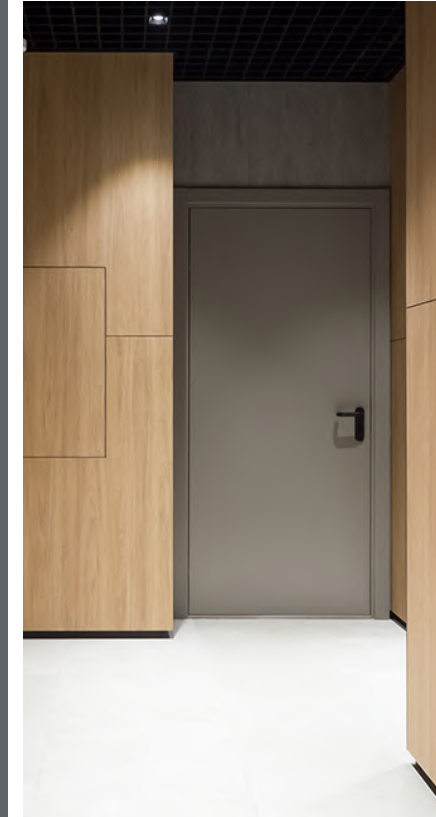


## INTERIOR DECORATIVE HPL PANELS

*Phenolic impregnated kraft papers pressed with high scratch resistant and hygienic decorative paper in 4mm / 6mm / 8mm / 10mm / 12mm in 1220x2440mm , 1300x3050mm and 1860x4200mm dimension with more than 500 design options and different core color options. 100% resistant to humidity and water.*

- Anti bacterial.
- Used in Hotels, Restaurants, Schools, and many other public projects.
- Common Usage Areas:
- Interior Wall Cladding,
- WC Partitions & sinks,
- Wet Areas,
- Table Tops,
- Counter Tops,
- Seperators, and more.

Details: [www.globalmost.com](http://www.globalmost.com)





## NANO Technology (Anti-fingerprint, Micro-scratch healing property) UltraMatt Sheets / Panels

*Electron Beam Curing technology is used on the surface of this ultramatt decorative sheets.*

*Used mainly in kitchen fronts, worktops, offices and many other interior decorative applications.*

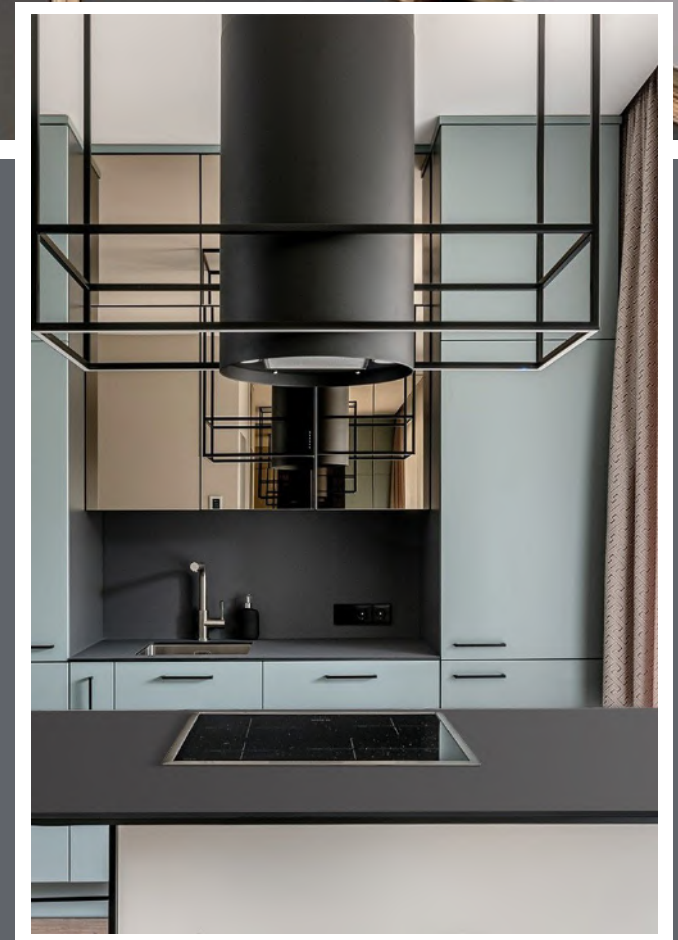
**Available Dimensions:** 1300x3050mm and 1300x4200mm for sheets.

*MDF and Plywood based Panels where electron Beam Curing treated surface of this ultramatt decorative sheets pressed on one side of the raw board. Having the same decor on the backside of the panel.*

**Thickness of the board:** 19mm.

**Dimension:** 1220x2800mm.

*More than 500 decors available for production.*



## UV lacquered Boards:

*Decorative side is UV lacquered with a curtain flow system which let us attain the purest finish on the finish. Two alternative finishes available as SuperHighGloss and DeepMatt.*

**Thickness of the board: 18mm.**

**Dimension: 1220x2800mm.**



*www.globalmost.com*



---

*Incek Blv. Kizilcasar Mah. Incek Vista No:75, P.C: 06830, Golbasi Ankara, Turkey*  
*Phone: +90 545 876 81 11 | Email: info@globalmost.com*